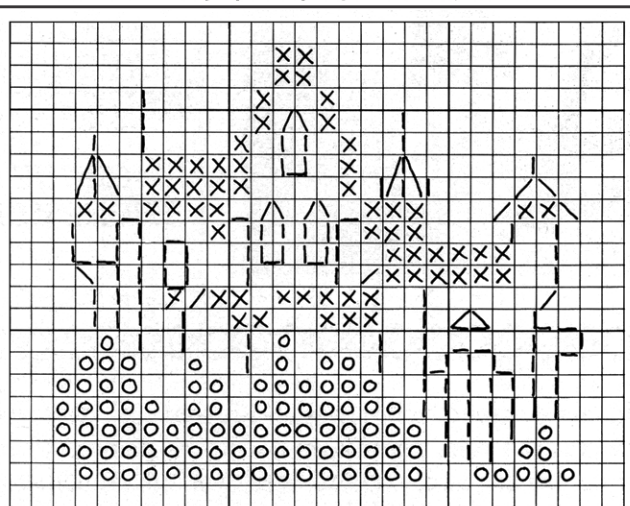




Magic Castle

*Stitch an enchanted castle for yourself or a friend.
I wrapped mine around a small ornate bottle
holding Pawleys Island sand. But it could also be
framed--maybe as a dollhouse miniature, or whatever
you can imagine.*

This is a very quick project and fun to do!



	Flower Thread	DMC Floss
× Gold	203	832
○ Green	100	469
Backstitches are the same as X. Design by MS		