

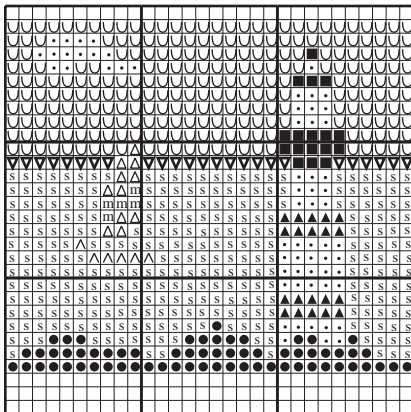
Q25

Sea Scape

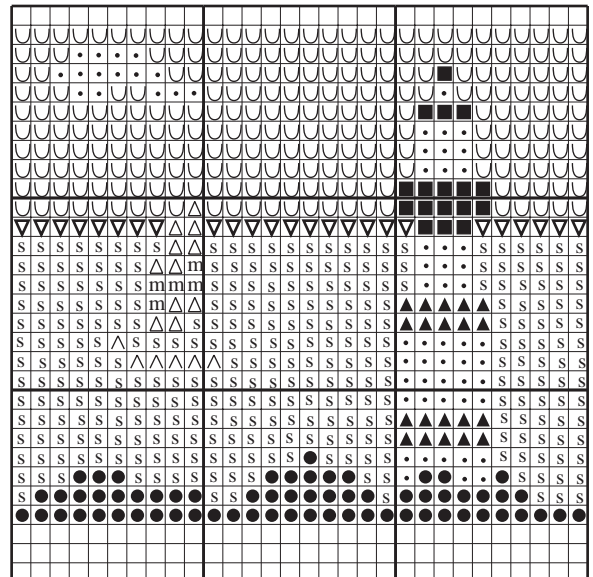


How to Add Cross Stitch to Clothing

Copy the chart and trim out the motif you want to use. Pin it to the garment while you are wearing it for precise placement. Pin 20ct or 28ct linen over the pattern on three sides, carefully centered and straightened. Slip the pattern out from under the linen and pin the fourth side. Baste the linen in place and remove pins. Stitch the design with 2 strands of Ginnie Thompson Flower Thread on 20ct linen, or 1 strand on 28ct linen using a chenille needle (it has a large eye and a sharp point). Some fabrics will allow you to use a tapestry needle. Trim the linen to one-half inch from the stitching and remove the shortest threads first, then the long threads. This is sure to become your favorite garment and your friends will all be amazed!



28ct (14 sts/inch) actual size



20 ct (10 sts/inch) actual size

- . 150 bright white
- ▲ 250 dk. red
- △ 340 yellow
- m 355 orange
- 463 dk. green
- s 510 bright blue
- ∪ 525 lt. blue
- ▽ 535 royal blue
- ^ 700 sand
- 900 black

www.FlowerThread.com